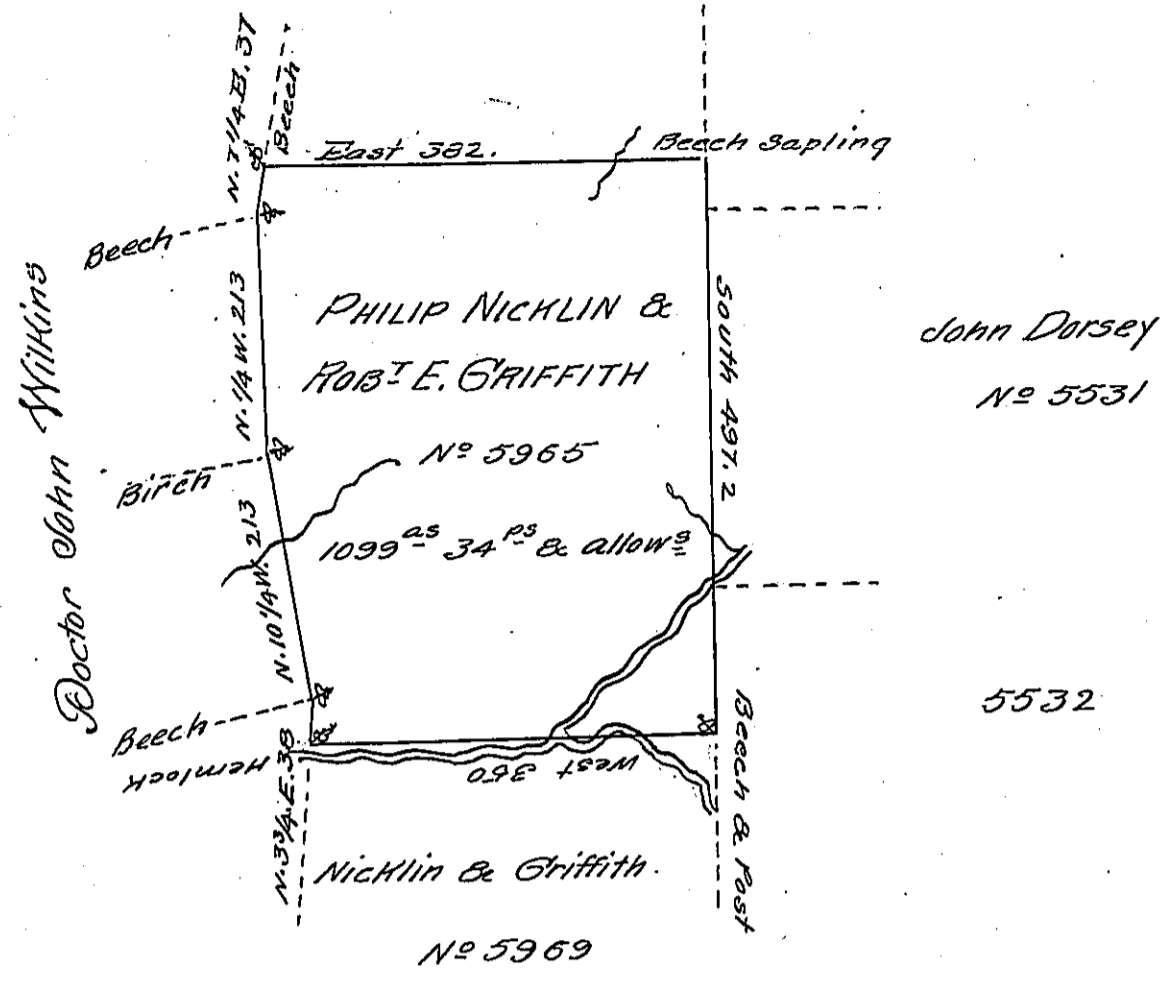


FORM No. 1.

Nicklin & Griffith  
No 5945



The Draft of Tract of Land in Conewango Township Warren County  
 East of Conewango Creek adjoining to Lands Warrented to John Dorsey to  
 Philip Nicklin & Robert E. Griffith Assignees &c. and other lands. Surveyed  
 May 5<sup>th</sup> 1808 in pursuance of a Warrant granted to Philip Nicklin and Rob-  
 ert E. Griffith (assignees of Joseph Boone who was assignee of John Nic-  
 holson) No 5965 bearing date the 19<sup>th</sup> day of March 1805.

Sam<sup>l</sup> Dale D.S.

To Samuel Cochran Esq<sup>r</sup>  
 Surveyor General.

IN TESTIMONY that the above is a copy of the original remaining on file in  
 the Department of Internal Affairs of Pennsylvania, made  
 conformably to an Act of Assembly approved the 16th day of  
 February, 1833, I have hereunto set my Hand and caused  
 the Seal of said Department to be affixed at Harrisburg,  
 this seventeenth day of April 1906

*Lucas D. Brown*  
 Secretary of Internal Affairs.